

CITY OF YOKOHAMA

Yokohama City's Initiatives: Waste Management and Collaborative Efforts with Citizens

Masakazu Yoshikawa

Director, Resources and Waste Recycling Bureau,
City of Yokohama

August20, 2025



横浜市

1. About Yokohama City

Minato Mirai 21



International port city



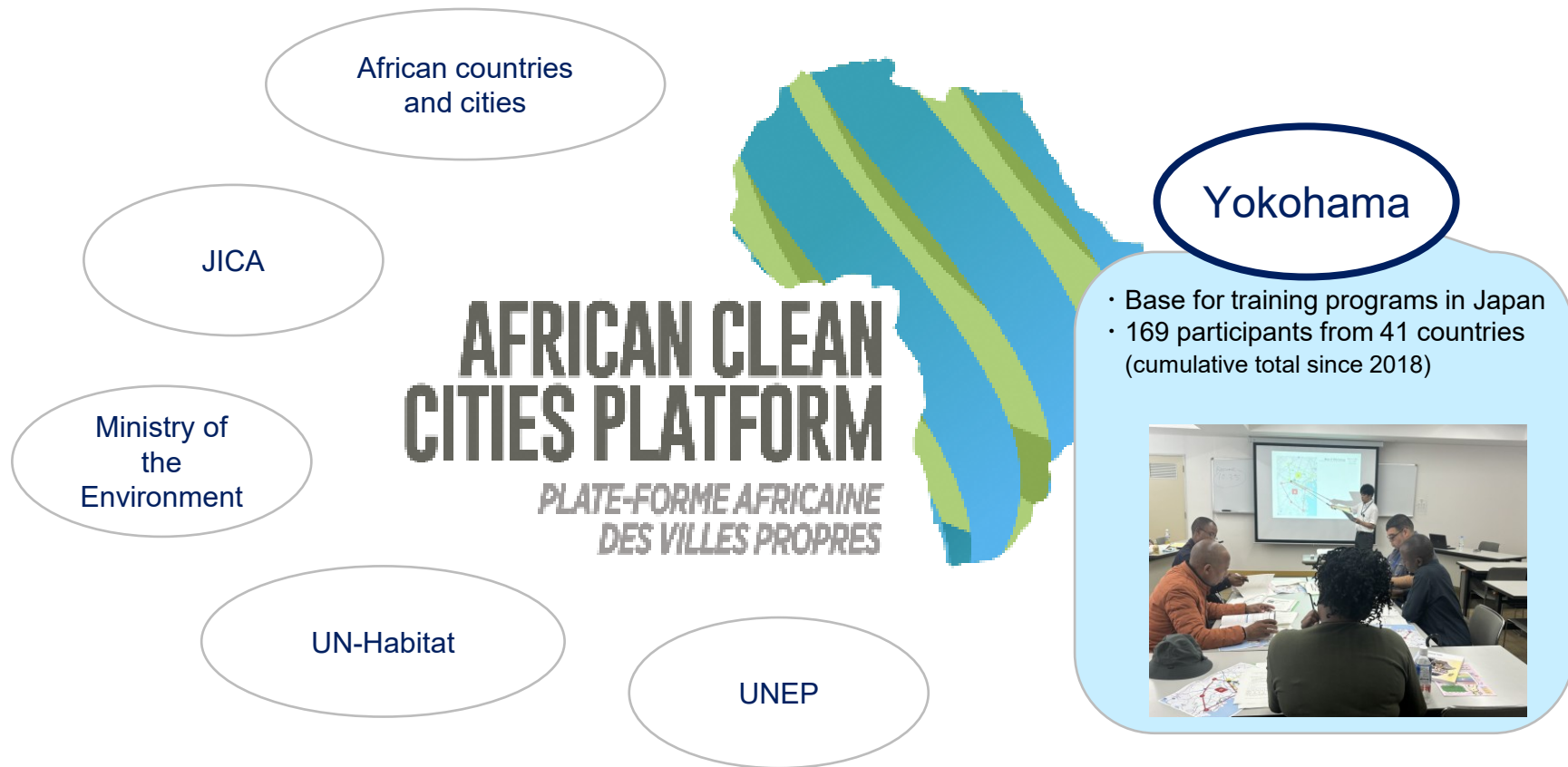
City of tourism



Lush nature



2. Yokohama City's Roles in ACCP



Part 1

Waste Management in Yokohama City

3. Waste Collection in Yokohama City: Household Waste and Resource Flow

Incineration



Incineration Plant

Ash



Disposal site

Collection

Combustibles

Non-combustibles

Recyclables

Collection

Intermediate treatment



Recycling Center

Collection

Recycling

Sorted disposal



Collection site

Approx. 80,000 locations



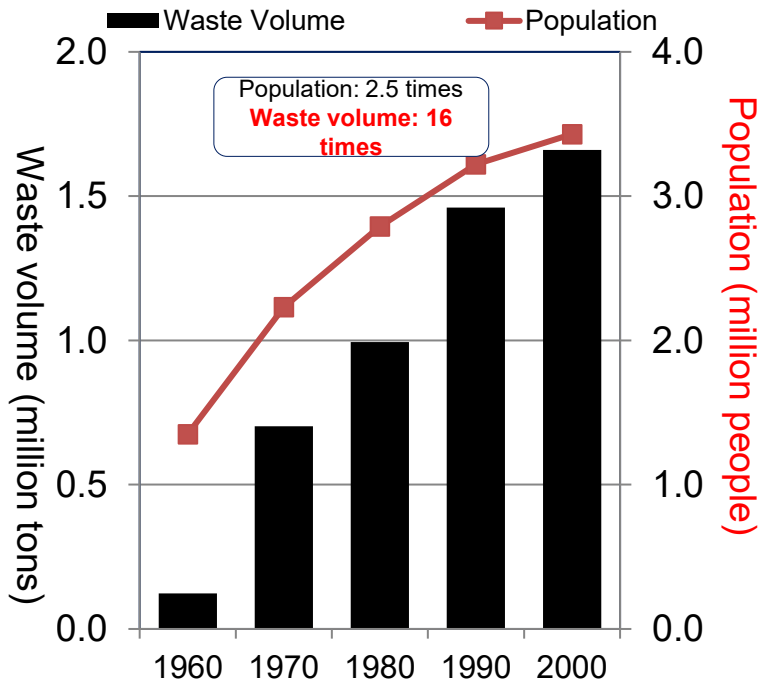
ISUZU

横浜市資源循環局
中事務所

4. Evolution of Waste Management in Yokohama City: From Mass Disposal to a Sound Material-Cycle Society

1960s to 1990s

Measures to address mass production, mass consumption, and mass disposal



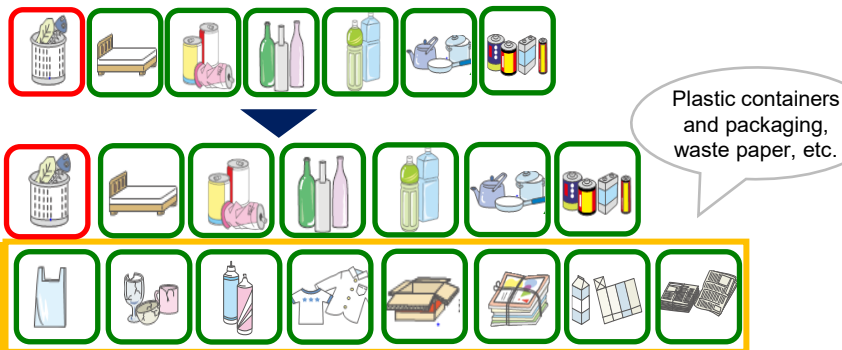
Establishment of incineration plants and final disposal sites that take into consideration hygiene and living environments

4. Evolution of Waste Management in Yokohama City: From Mass Disposal to a Sound Material-Cycle Society

2000s onward: Promotion of waste sorting and recycling

①Expansion of sorted items Turn burnable waste into resources

From 5 categories and 7 items to 10 categories and 15 items



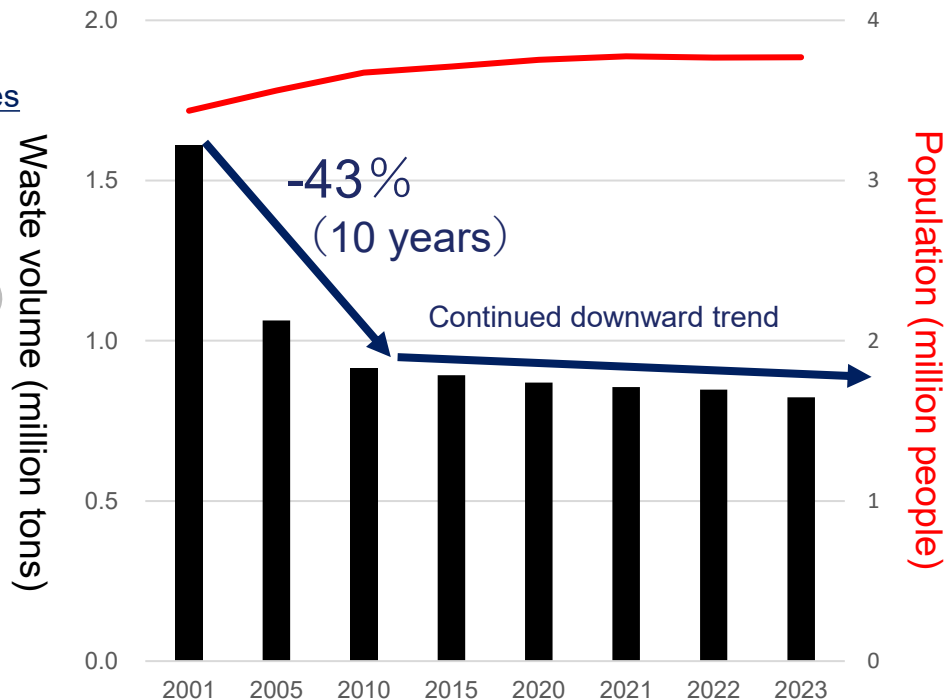
②Promotion of 3Rs



Awareness-raising and education by staff



Promotion of recycling by citizens



Achieved significant waste reduction through collaborative efforts with citizens

4. Evolution of Waste Management in Yokohama City: From Mass Disposal to a Sound Material-Cycle Society

Conceptual diagram of a Sound
Material-Cycle Society

Food and organic matter
cycle

Industrial product and
construction cycle

Return to nature

Composting (e.g., soil
incorporation method)

Recycle

Promotion of food waste recycling

Conversion of waste cooking
oil to sustainable aviation fuel
(SAF)

Share

Reduction of food loss and waste
Restaurants taking part in the Clean
Plate campaign, food drives

Recycle

Collection and recycling of recyclable materials
(Cans, glass bottles, plastic bottles, dry cell batteries,
waste paper, small home appliances, etc.)

Reprocessing of unwanted clothing

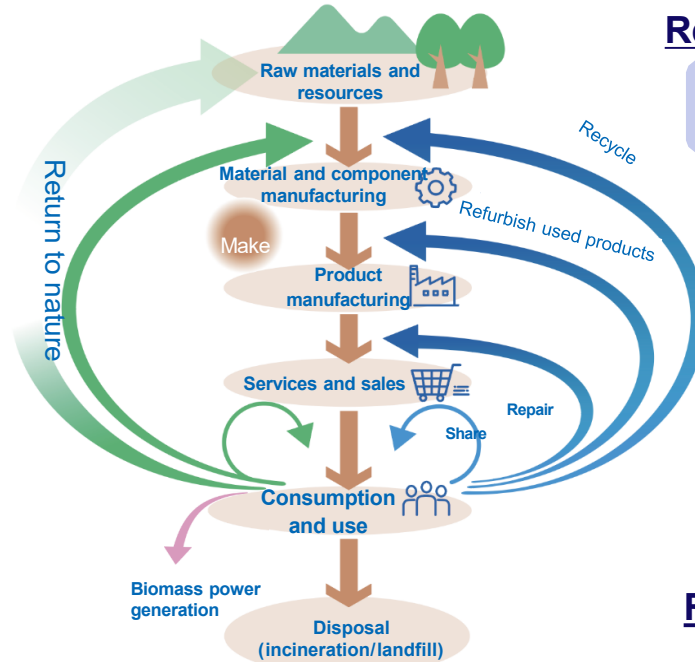
Refurbish used products

Implementation of bottle-to-bottle (horizontal
recycling of PET bottles)

Expansion of plastic waste sorting and recycling

Repair

Reuse of furniture and books



Part 2

Promoting Collaborative Efforts and Behavioral Change Among Citizens

Specific Initiatives

1. Promoting Collaborative Efforts and Behavioral Change Among Citizens: Environmental Project Promotion Committee

Volunteer leaders who promote environmental activities

Commissioning and award system

- Recommended by the community and appointed by the mayor
- Those who have made outstanding contributions receive an award from the mayor

Activities

- Promotion of waste sorting and proper behavior at garbage collection sites
- Community cleanup and beautification activities
- Promotion of 3R activities
- Coordination between the community and government agencies



Creating a culture where citizens take the initiative in keeping their community clean

2. Promoting Collaborative Efforts and Behavioral Change Among Citizens: Collection of Recyclables



横浜市

A community-based collaborative project to promote waste reduction and recycling among citizens, businesses, and government agencies



3. Promoting Collaborative Efforts and Behavioral Change Among Citizens: Environmental Education

Environmental education for children, the next generation of stewards

→Approx. 260,000* children and students
(8% of Yokohama's population)



- Becomes a habitual practice from an early stage
- Ripple effect from children to parents and the rest of the family

Nursery schools



Paper theater, puppet theater, and vegetable cultivation using soil mixing method

Elementary schools



Distribution of supplementary reading materials to all fourth-grade elementary school students and tour of incineration plant

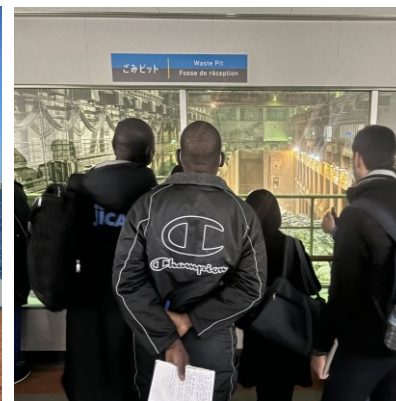
Junior high and high schools



Data-driven specialized learning linked to social issues and SDGs

**Implementation of measures tailored to grade levels and ages
to promote a proper understanding of waste**

In Conclusion



明日をひらく都市

OPEN  PIONEER

YOKOHAMA