



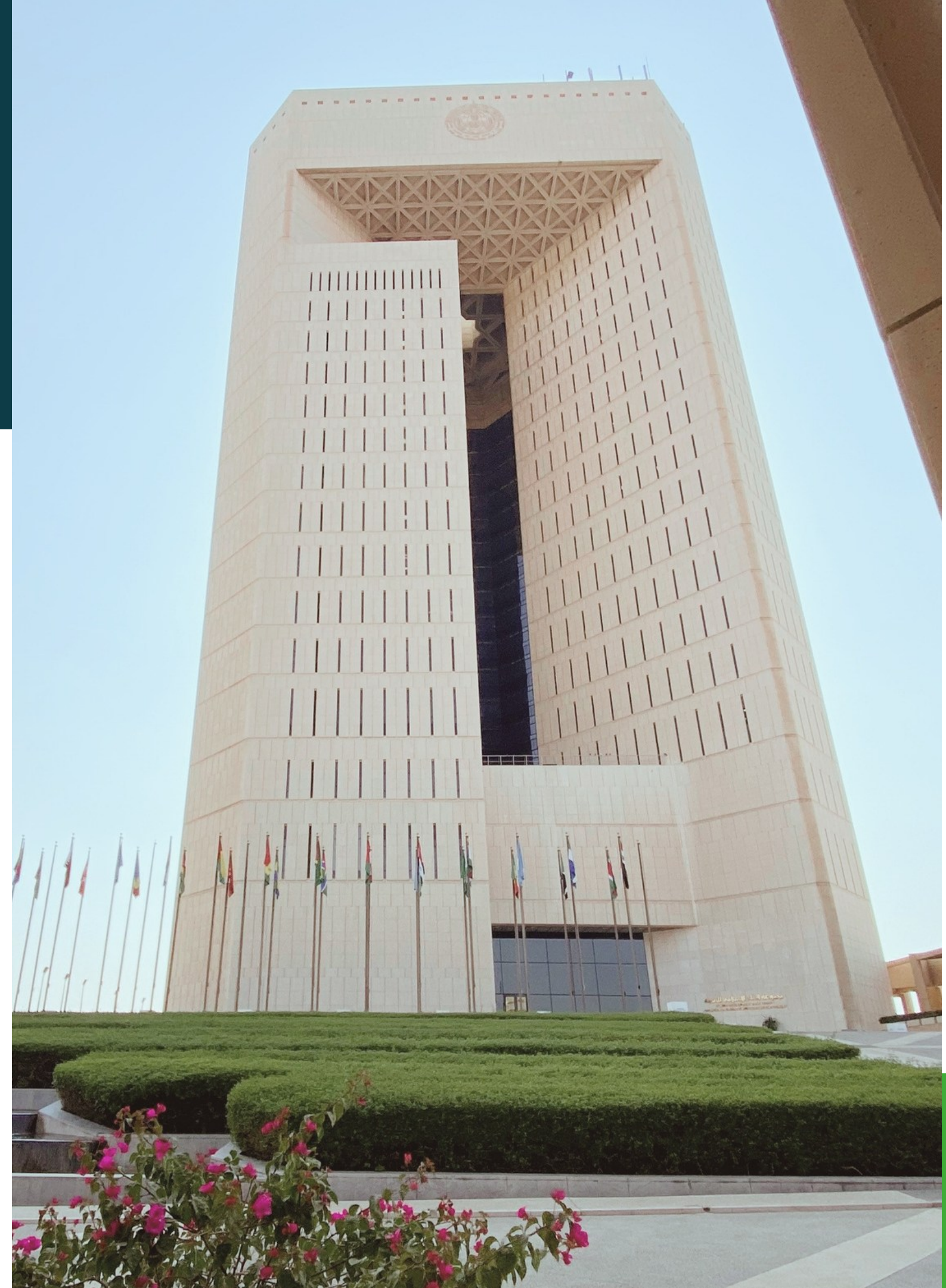
IsDB Operational Strategy & Interventions in Municipal Solid Waste in Sub-Saharan Africa region

ACCP Assembly in Yokohama
21 August 2025



Why IsDB Exist?

The Islamic Development Bank (IsDB) is a financial institution that **promotes socio-economic development for people in 57 Member Countries** and Muslim communities in Non-Member Countries.

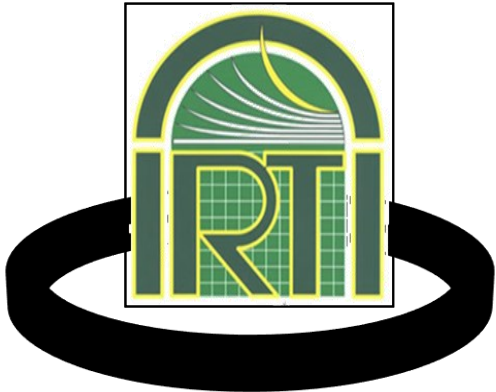


Structure



1975

Institution has evolved from single entity to a group comprising of six members



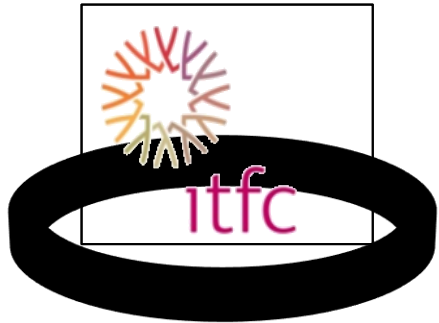
1975



1994



1999



2008



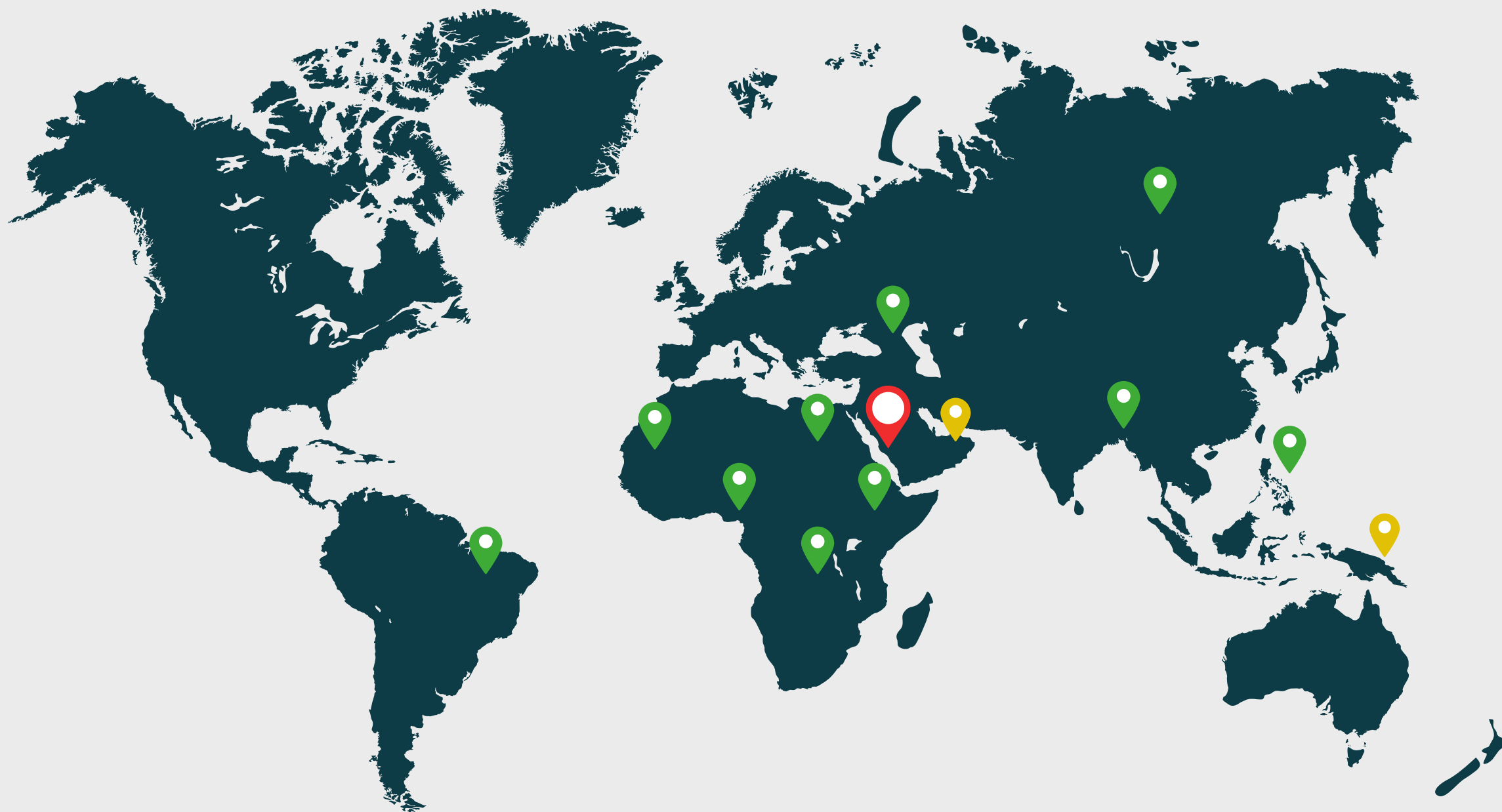
2005




Islamic Research and Training Institute

Islamic Corporation for the Insurance of Investment and Export Credit

Islamic Corporation for the Development of the Private Sector

International Islamic Trade Finance Corporation



-  ISDB HEADQUARTER
-  11 REGIONAL HUBS
-  2 CENTERS OF EXCELLENCE

Where We Are

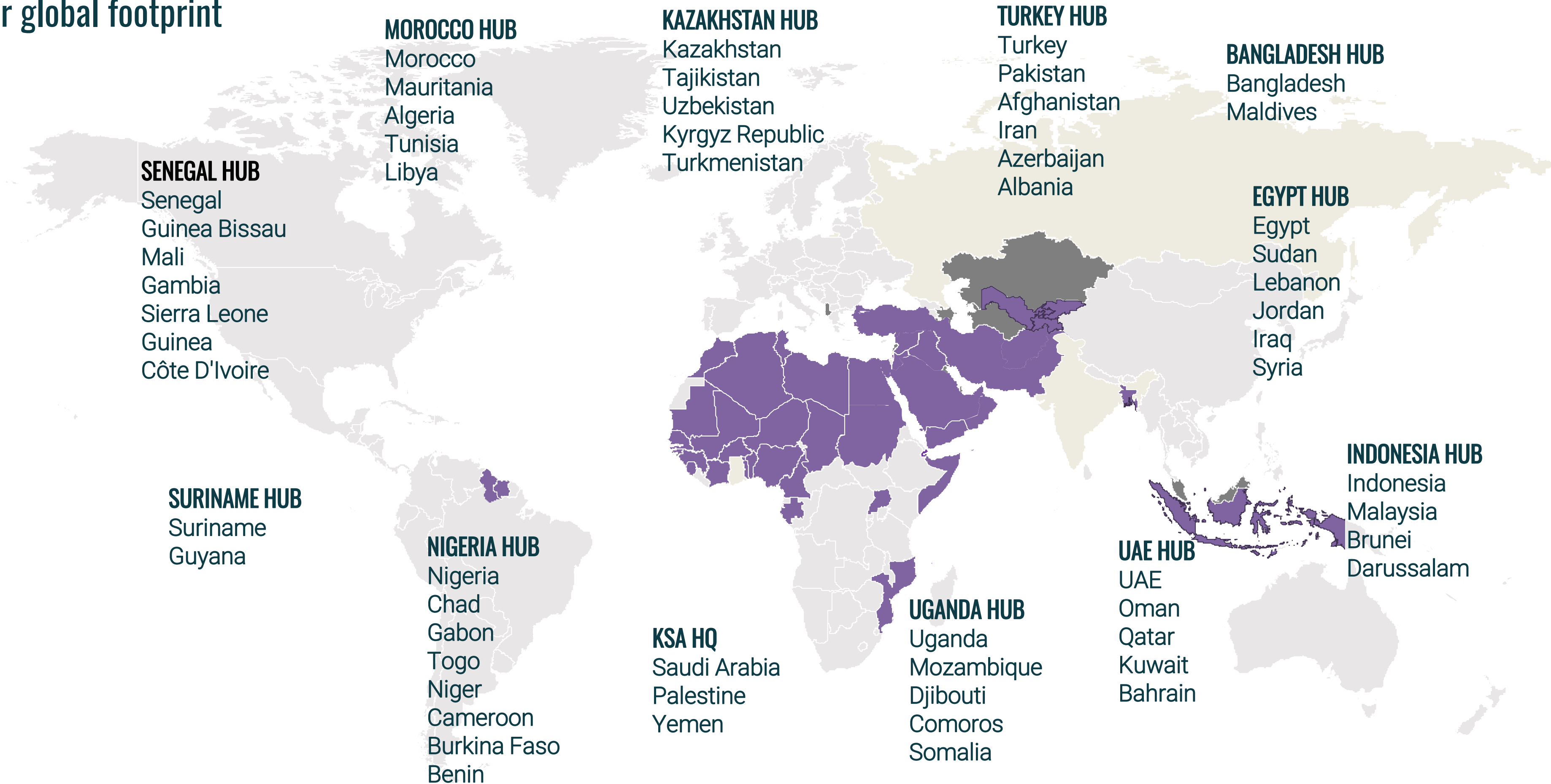
We have our footprints across the 4 continents



Key facts about IsDB

- HQ established in Jeddah, KSA 1975
- Global MDB membership includes 57 countries spreading over 4 continents
- 11 Regional Hubs by 2020
- 1,128 staff distributed across entities & regional hubs

Our global footprint





Who We Are?

Vision

To equip people to drive their own economic and social progress at scale, putting the infrastructure in place to enable them to fulfil their potential.



Mission

To build collaborative partnerships between communities and nations, across the public and private sectors, as well as foster innovative and sustainable solutions to the world's greatest development challenges, as we work towards the UN Sustainable Development Goals.



Our Values

1 We Believe

all people have the right to live in dignity and prosperity, and that nurturing economic growth is the best of poverty.

2 We Equip

people to drive their own economic and social progress at scale, putting infrastructure in place to enable them to fulfill their potential.

3 We Build

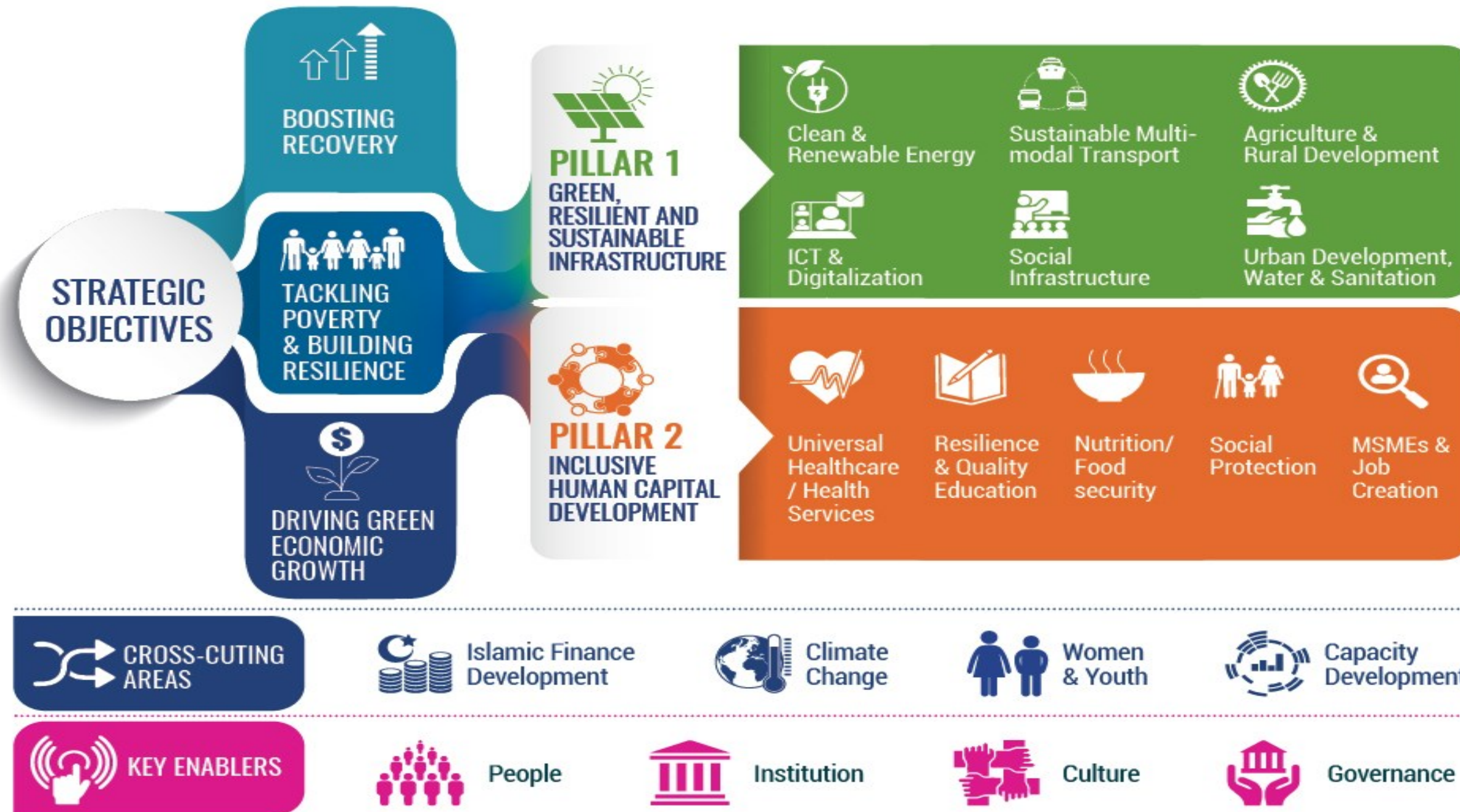
collaborative partnerships among communities and nations, across the public and private sectors.

4 We Foster

innovative and sustainable solutions to the world's greatest development challenges, as we work towards the sustainable development goals.



Strategic Objective and Focus Areas of IsDB



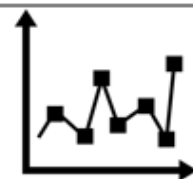
Urban Sector Policy and Operational Strategy

Overarching Goal



Sustainable and Inclusive
Urban Development

Policy Pillars



Urban Economy



Urban Mobility



Urban Housing &
Slum Upgrading



Urban Water &
Sanitation



Climate Action &
Disaster Resilience

Enablers



Urban
governance

National
Urban Policy

Urban
Planning

Municipal
Finance

Citizen
Engagement

Building
Partnerships

STI & ICT
Applications

Guiding Principles

Country-focused
selectivity

Capacity building &
Knowledge Sharing

Financing mechanisms
including PPP

Women & Youth
Empowerment

URBAN STRATEGY OPERATIONAL FRAMEWORK

Vision

Prosperous and Livable Cities

Overarching Goal



Sustainable and Inclusive Urban Development

Urban Economy

S01: Promote vibrant urban economies that create the needed job opportunities for youthful urban populations and rural migrants.

Urban Mobility

S02: Increase urban productivity by reducing congestion and enhancing urban mobility, contributing to greater firm efficiency in cities.

Urban Housing & Slum Upgrading

S03: Stimulate housing markets to expand urban housing stock, while ensuring housing delivery reaches down market to the under-served, poor and vulnerable urban residents.

Urban Water & Sanitation

S04: Increase access to safe and clean water and sanitation services in cities with systems that achieve cost recovery and sustainability over time.

Climate Action, Disaster & Environmental Resilience

S05: Enhance urban resiliency to climate and human induced-disasters, while reducing cities' carbon footprint and safeguarding the environment.

Implementation Modality 1:

Build and develop an **Integrated Urban Operating Model (IUOM)** that leverages the multi-dimensional strengths of IsDB Global Practices and Operation Units and promotes **co-location** of projects and programmes.

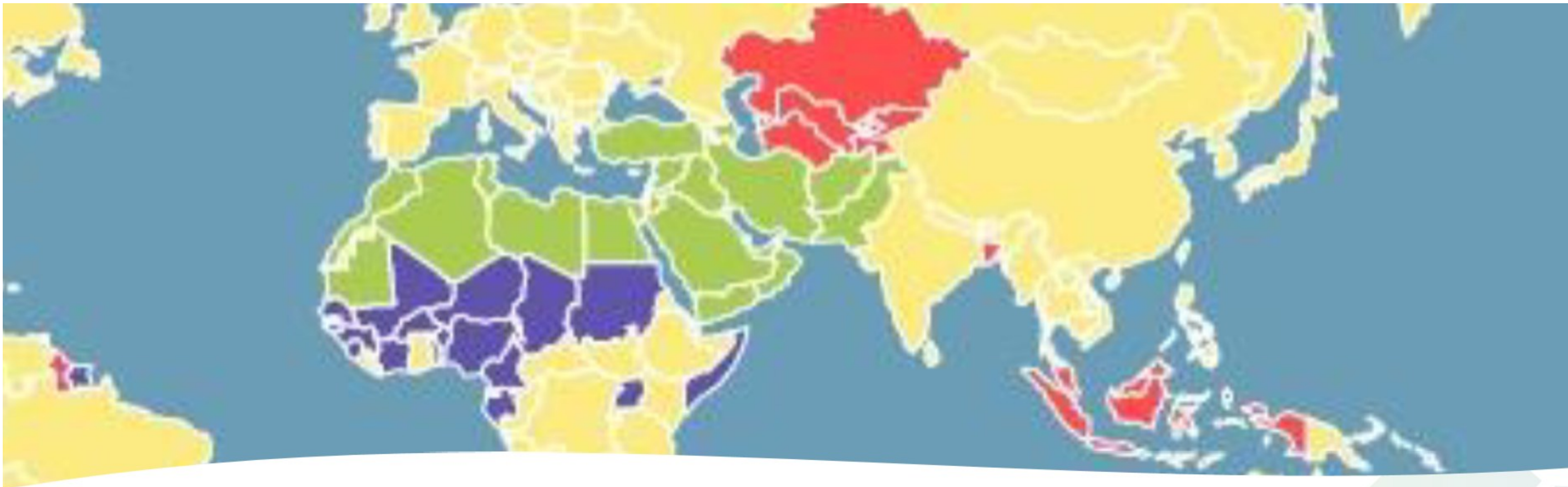
Implementation Modality 2:

Identify **urban priority investment areas** at the regional level depending on MC economy readiness, implementation capabilities and regional dynamics.



- This Operational Strategy adopts an Integrated Urban Operating Model for relevant Global Practices and Sectors of IsDB working in urban space.
- It does so by going beyond offering a framework only for the Urban Sector to elaborating a platform for collaboration among global practices and other sectors in urban space that avoids the silo approach and attempts to leverage synergies and co-benefits that can come from better coordination and planning of sector interventions.
- Using the IUOM will help to develop “co-location” of projects, leverage synergies and cooperative engagement of multiple IsDB sector and thematic teams and expertise to support urban development.

Implementation Modality 1: Integrated Urban Operating Model (IUOM)



Implementation Modality 2

Priority Interventions under USP Pillars
by **Regional Group** and **Income Classification**

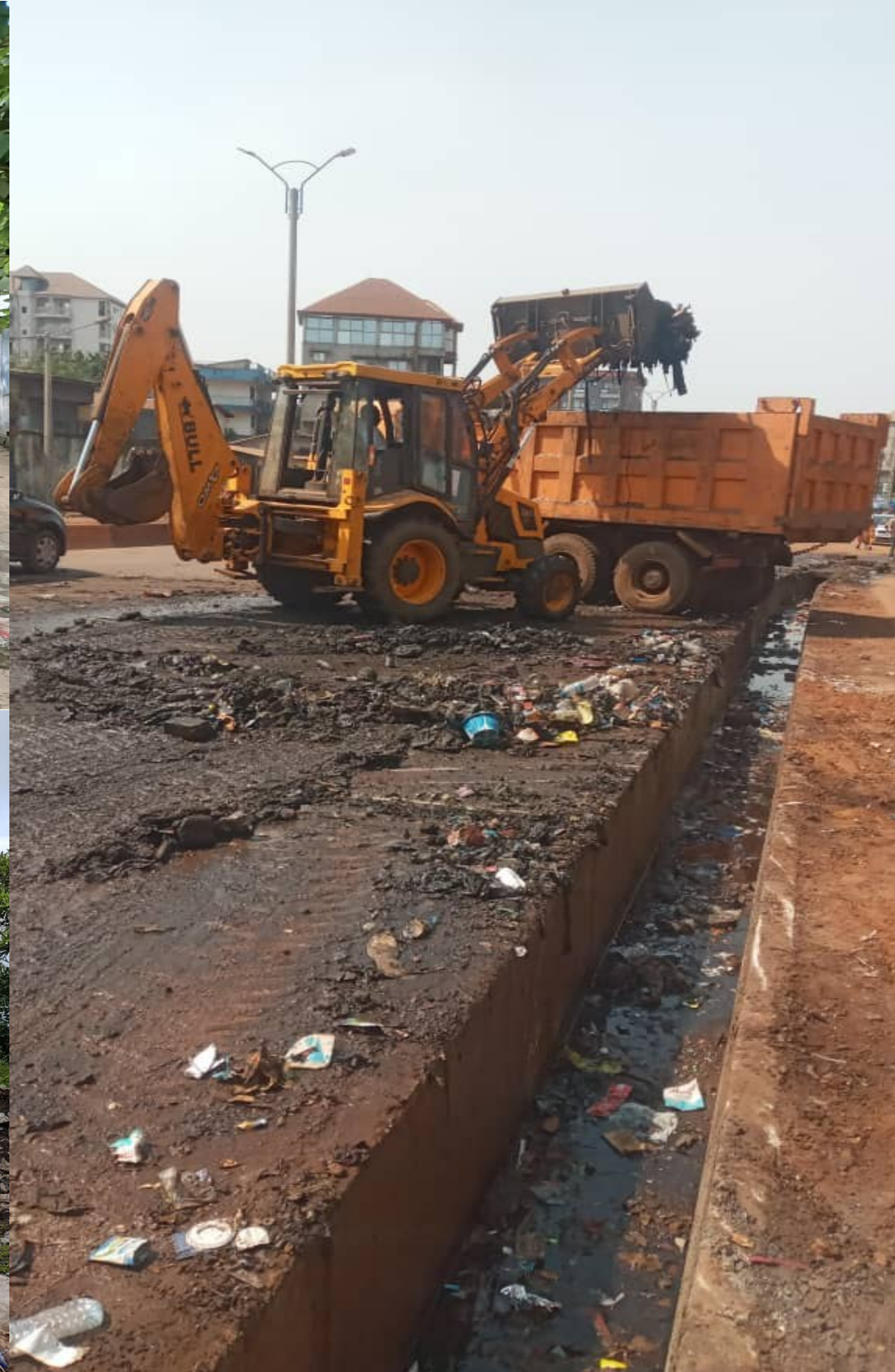
Priority Interventions under USP Pillars by Regional Group and Income Classification

	IsDB USP Potential Project Intervention Typologies Infrastructure and/or Equipment & Technical Assistance (Entire Project or Component of Project)	IsDB Regional Group, Country Income Classification & Priority Rank												
		SSA (1)			MENA (2)			ASIA (3)			LL	FCA		
		UM	LM	L	H	UM	LM	L	H	UM			LM	L
Urban Economy	Urban Regeneration/Upgrading Commercial Districts	M	L	L	L	H	H	L	M	M	L	L	M	M
	Cultural Heritage, Historic City Tourism-led Development	M	M	L	L	M	M	M	L	M	L	L	M	L
	Municipal Enterprise/Industrial Parks or Zones	H	H	H	L	M	M	H	L	M	M	M	H	L
Urban Mobility	Alternative Transport Mobility Options	H	H	H	L	H	H	L	L	H	H	M	M	M
	Low Carbon Public Transit Development or Expansion	H	H	M	L	M	M	M	M	H	H	M	M	L
	Urban Road Safety	M	M	M	H	H	H	M	L	H	H	H	M	L
	CBD/Commercial District Congestion Relief Measures	M	M	L	L	H	H	H	M	H	H	H	M	M
Urban Housing	Slum Upgrading	H	H	M	L	M	H	H	L	M	H	H	M	H
	Serviced Land for Private Housing	H	H	M	L	H	H	M	L	M	M	M	M	L
	Low Income Public Housing	M	H	H	L	M	H	H	L	M	H	H	M	M
Urban Water & Sanitation	Water and Sanitation Network Rehabilitation/Extension	H	H	H	L	M	M	H	L	M	H	H	M	H
	Water Supply Conservation/Energy Efficiency + Utility Management, including responses to Droughts	M	H	H	H	H	H	M	L	M	M	M	M	L
	Wastewater & FSM Treatment Plants	M	L	L	M	M	L	L	L	M	M	L	M	L
	Water Supply Treatment Plants	H	H	M	L	M	M	M	L	M	M	M	M	L
Disaster, Climate & Environmental Resilience	Energy Efficiency and Safe Municipal Public Buildings & Residential Housing	M	M	M	L	M	M	M	M	M	M	M	M	L
	Solid Waste Landfills and SW Management Enhancement	H	H	H	L	M	M	M	L	M	M	M	M	M
	Stormwater Drainage and Flood Protection Measures	M	M	M	L	M	M	M	M	H	H	H	M	M
	Energy Efficiency and Disaster Resilient Residential Housing	L	M	M	L	M	M	M	L	M	M	M	M	L
	Conflict-induced Displacement Disasters	L	M	M	L	H	H	H	M	M	M	M	M	H

Biggest Municipal Solid Waste Management Projects recently financed by the IsDB in SSA region

- ❑ Conakry Sanitation Project: US\$ 56 millions (Guinea)
- ❑ Abidjan Sanitation and Stormwater drainage project: Euro 80 million (Cote d'Ivoire).
- ❑ Municipal Solid Waste Management Program in four regions : US\$ 35 millions (Senegal).

Photos from Conakry Sanitation Project



Photos from Abidjan Sanitation and Stormwater Drainage Project





IsDB

**Thank you
Merci**

شكرا