

FACTSHEET

# Waste Wise Cities Tool in Karongi, Rwanda



Step 1: Preparation



Step 2: Household MSW Generation and Composition



Step 3: Non-Household MSW Generation



Step 4: MSW Received by Recovery Facilities and Control Level of Recovery Facilities



Step 5: MSW Received by Disposal Facilities and Control Level of Disposal Facilities



Step 6: Waste Composition at Disposal Facilities



Step 7: Calculating Food Waste, Recycling, Plastic Leakage, Greenhouse Gas Emissions and Air Pollution

In the rapidly urbanizing world, the crisis in waste management and plastic pollution is a reflection of current unsustainable lifestyles.

The availability of fact-based data on municipal solid waste can guide evidence-based planning and lead to increasingly effective and efficient solid waste collection systems, enhanced local resource recovery and controlled waste disposal, thereby improving the quality of life for urban residents.

UN-Habitat's Waste Wise Cities Tool (WaCT) assesses the parameters for Sustainable Development Goal indicator 11.6.1 - the proportion of municipal solid waste collected and managed in controlled facilities out of total municipal solid waste generated, by the city. It consists of seven steps and provide the necessary data to support evidence-based decision making by city managers.

**Together we can achieve a sustainable future.**

Have a look at the Waste Wise Cities website, learn about the WaCT and how its application created impact on the ground in other cities.



City: **Karongi**  
Country: **Rwanda**

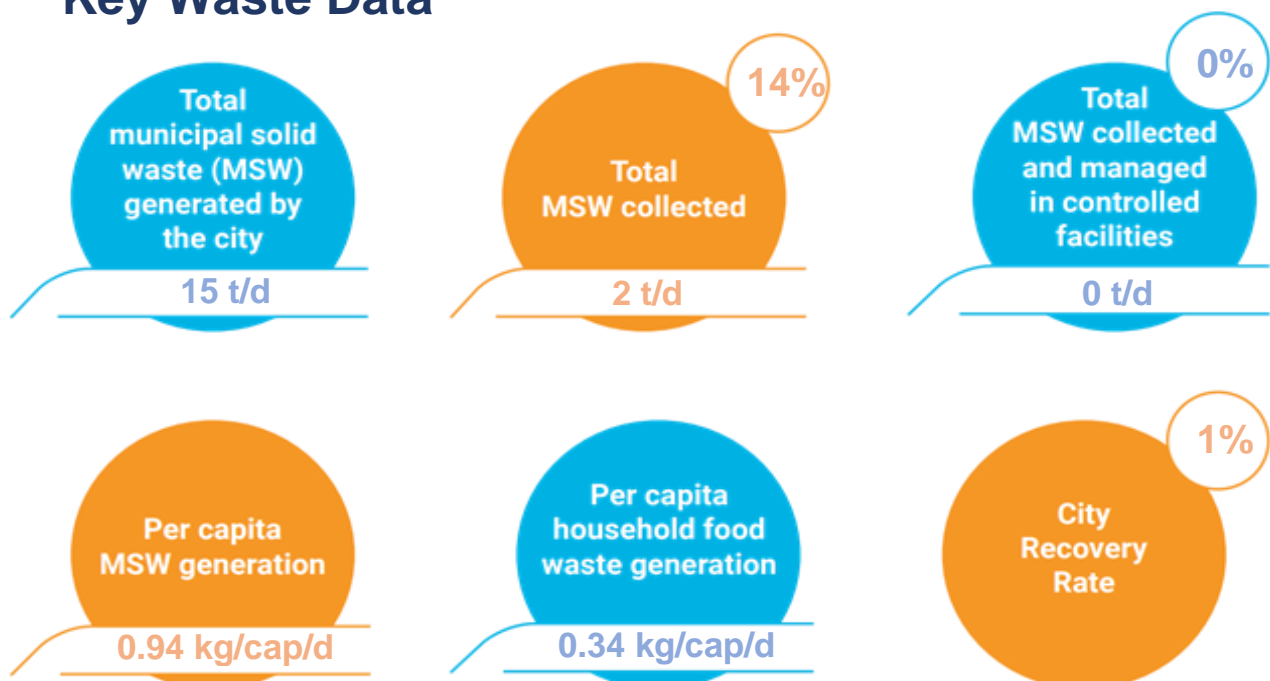


Population:  
**15,705 (2022)**



Year of WaCT Survey:  
**2023**

## Key Waste Data





## Household and non-household waste generation



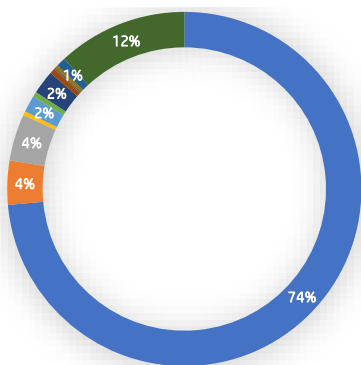
|               | Average household waste generation (kg/capita/day) | Total population | Total MSW generated by households (t/day) |
|---------------|--|------------------|---|
| High income   | 0.55   | 2,280            | 1   |
| Middle income | 0.50   | 3,775            | 2   |
| Low income    | 0.74   | 9,650            | 7   |
| <b>TOTAL</b>  | <b>0.66</b>  | <b>15,705</b>    | <b>10</b>                                 |



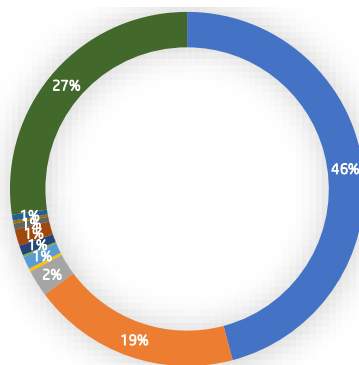
Total MSW generated from non-household sources (t/day): 4  
 calculated using proxy of 30 % of total MSW

## Composition of waste at the households and at the disposal site

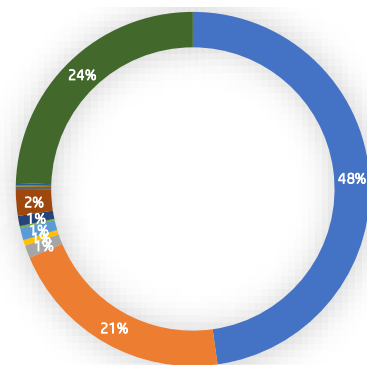
Household waste composition  
higher income areas



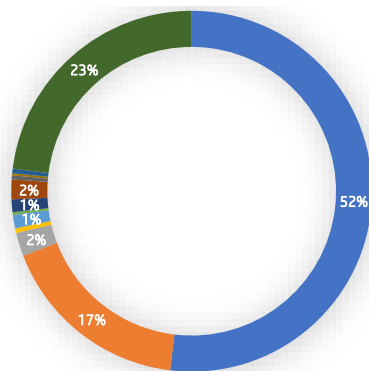
Household waste composition  
middle income areas



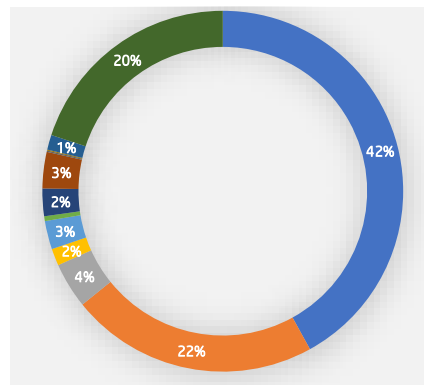
Household waste composition  
lower income areas



Average household waste  
composition



Waste composition at disposal site



- Kitchen / canteen
- Garden / park
- Paper / cardboard
- Plastic film
- Plastics dense
- Metals
- Glass
- Textiles / shoes
- Wood (processed)
- Special wastes
- Composite products
- Other

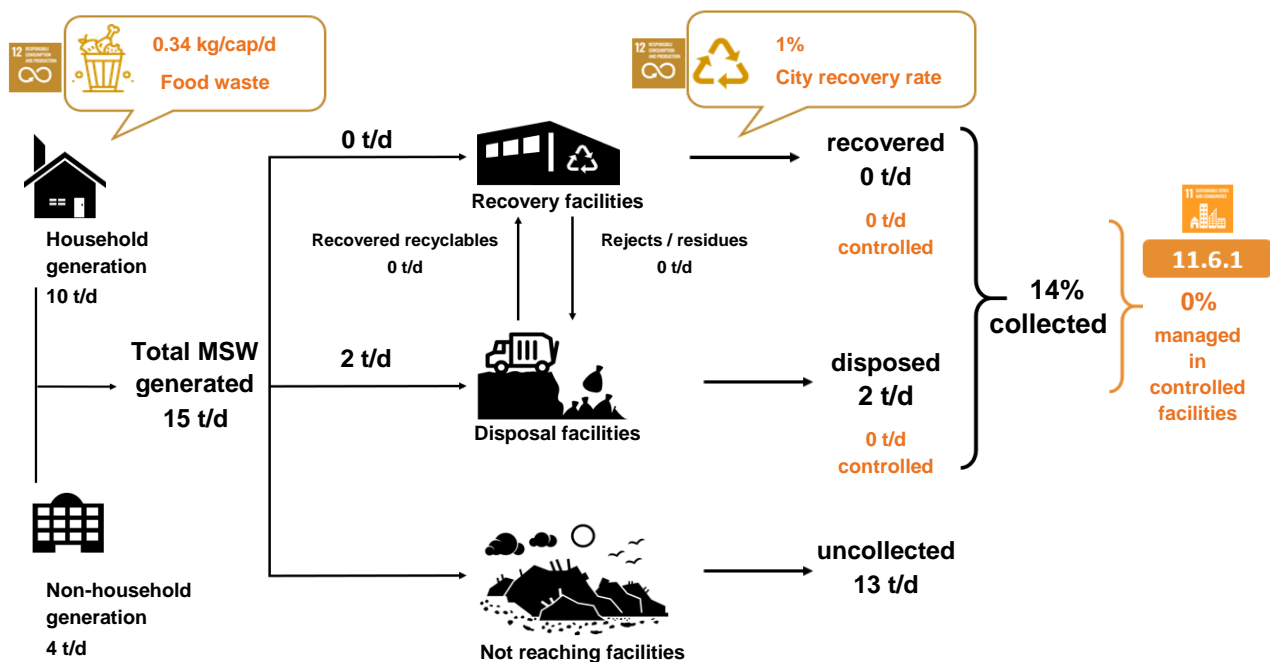


## Potential recyclables from households



| Types               | Recyclable waste generation from households (t/day) |
|---------------------|---|
| Food waste          | 5   |
| Plastic film        | 0   |
| Plastic dense       | 0   |
| Paper and cardboard | 0   |
| Glass               | 0   |
| Metal               | 0   |
| <b>Total</b>        | <b>5</b>  |

## WaCT Flow Chart



For more info and if interested in WaCT application contact the Waste Wise Cities Team at [WasteWiseCities@un.org](mailto:WasteWiseCities@un.org)

**UN HABITAT**  
FOR A BETTER URBAN FUTURE

P.O. Box 30030, Nairobi 00100, Kenya  
T: +254-20-76263120  
E: [unhabitat-info@un.org](mailto:unhabitat-info@un.org)

**WASTE WISE  
CITIES**



**Andre Dzikus,**  
Chief Urban Basic Services Section

[WasteWiseCities@un.org](mailto:WasteWiseCities@un.org)  
[#WasteWiseCities](https://twitter.com/WasteWiseCities)





1



ad  
,  
s









